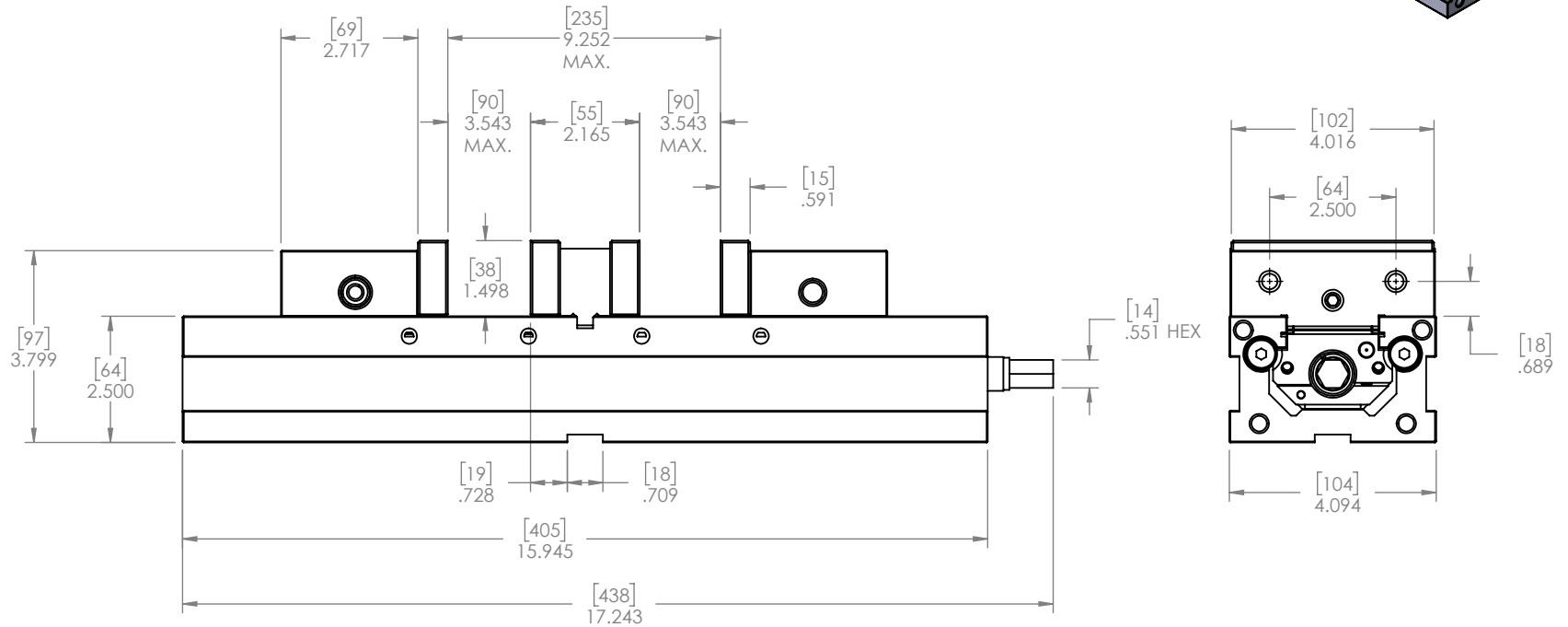
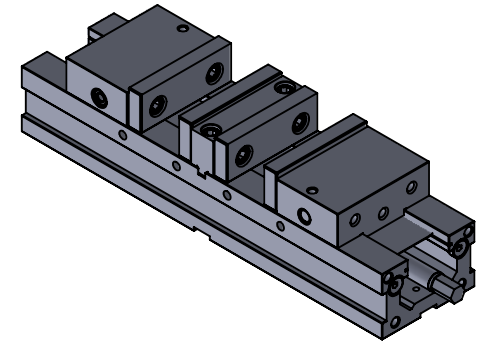
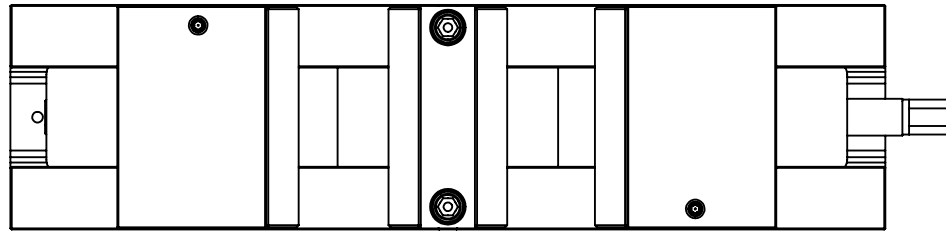



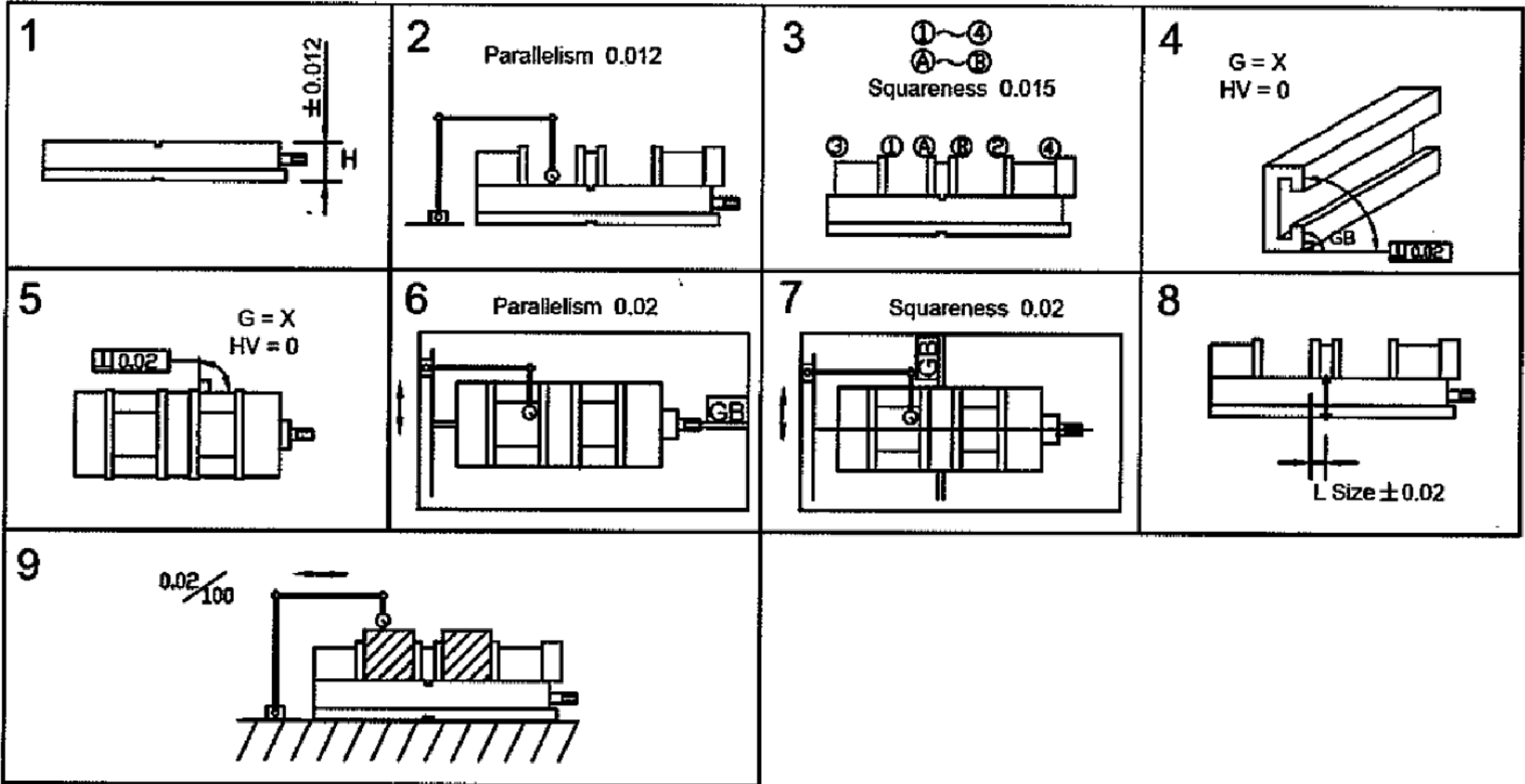
Torque Ft.-Lbs.	Clamping Force - Lbs
7	450
14	1124
22	1461
29	1798
36	2249
43	2698
51	3147
57	3822
65	4271
72	4946



NOTES:  
MATERIAL:  
BODY: DUCTILE IRON  
JAWS: HARDENED STEEL  
WEIGHT: 114.6 LBS  
SEE SHEETS 2 AND 3 FOR PERPENDICULARITY, PARALLELISM AND SQUARENESS

MATERIAL:	SEE NOTES	NAME	DATE	 <b>TOOLMEX™</b> <b>SOLE PROPERTY OF</b> <b>TOOLMEX INDUSTRIAL SOLUTIONS</b>
HARDNESS:	54 HRC	FINISH:		
<b>CONTACT INFORMATION:</b> Toll Free 855-869-2425 Fax 508-653-5110 www.tmxtools.com 34 TALBOT ROAD NORTH BOROUGH, MA 01532 USA				
DRAWN T. THACH 04-08-2020 ENG APPR. T. THACH 04-08-2020 MFG APPR. Q.A. APPR. SALES APPR.				
<b>CONFIDENTIAL</b> THIS DRAWING AND THESE SPECIFICATIONS ARE THE SOLE PROPERTY OF TOOLMEX INDUSTRIAL SOLUTIONS. AND SHALL NOT BE REPRODUCED, OR COPIED IN PART OR AS A WHOLE WITHOUT THE EXPRESS WRITTEN PERMISSION OF TOOLMEX INDUSTRIAL SOLUTIONS IS PROHIBITED.				
TITLE		SIZE	DWG. NO.	REV
4" DOUBLE STATION VISE		A	3-224-004	C
DO NOT SCALE DRAWING			SHEET 1 OF 3	





1	"H" tolerance: running face to bottom within	$\pm 0.0005"$ $\pm(0.012\text{mm})$
2	Parallelism: running face to bottom of bed	0.0005" (0.012mm)
3	Squareness: between running face and jaw plate	0.0006" (0.015mm)
4	Squareness: both sides to running face	0.0008" (0.02mm)
5	Squareness: both sides to fixed jaw plate	0.0008" (0.02mm)
6	Parallelism: keyways on bottom of bed to jaw plate	0.0008" (0.02mm)
7	Squareness: keyways on bottom of bed to jaw plate	0.0008" (0.02mm)
8	"L" tolerance: keyways on bottom of bed to jaw plate within	$\pm 0.0008"$ $\pm(0.02\text{mm})$
9	1. Parallelism: running face of the test block to bottom of bed	0.0008" (0.02mm)
	2. Jaw opening	4" (102mm)