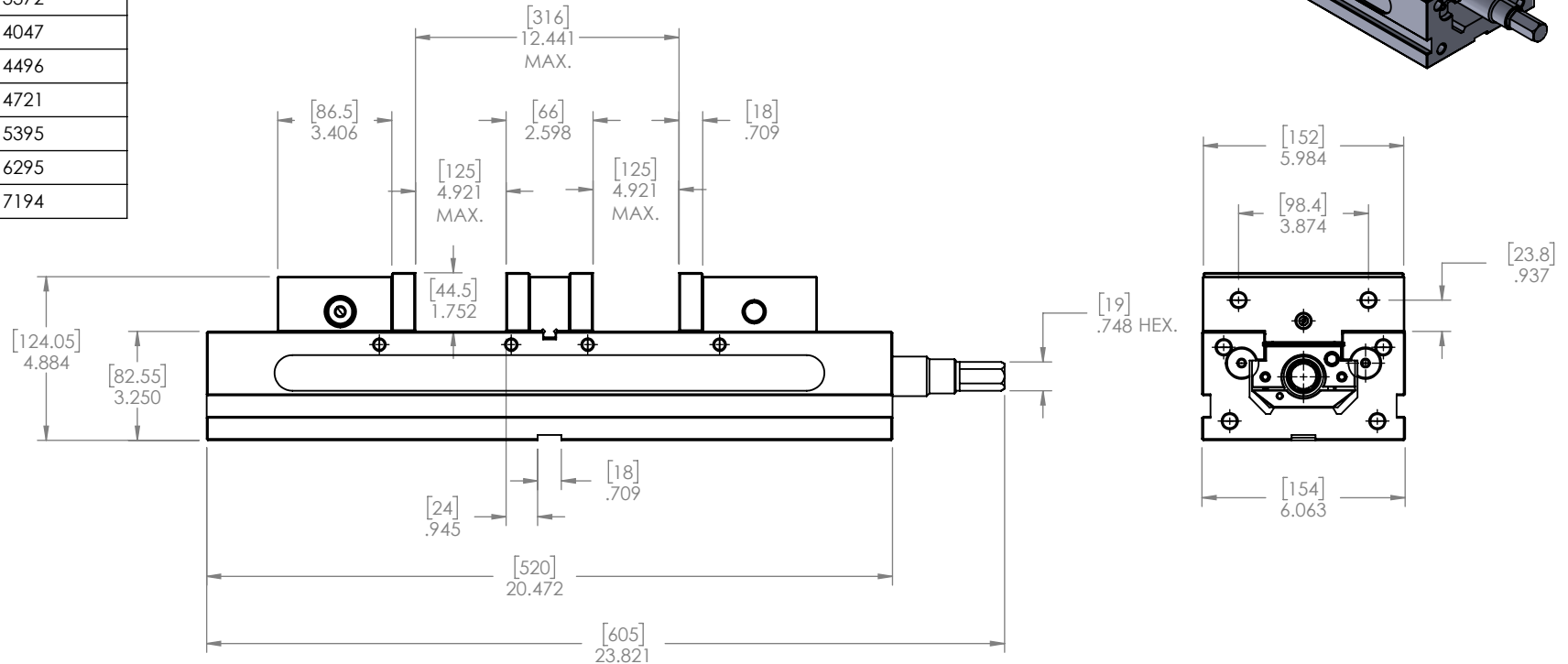
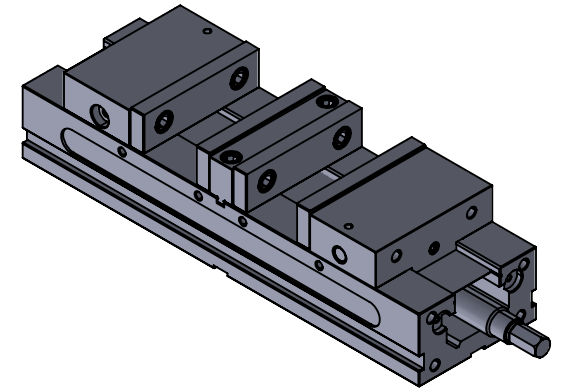
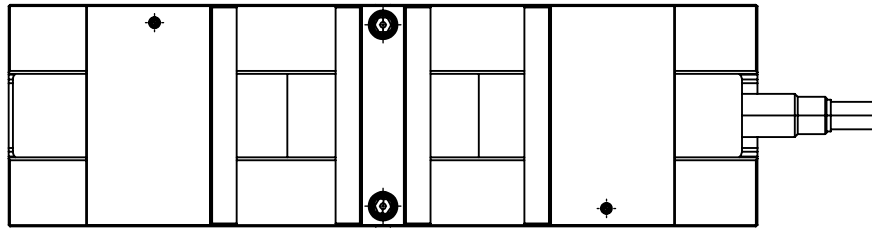


Torque Ft.-Lbs.	Clamping Force - Lbs
7	450
14	899
22	1124
29	1574
36	1798
43	2023
51	2473
57	3147
65	3372
72	4047
80	4496
87	4721
101	5395
116	6295
130	7194



NOTES:

MATERIAL:
 BODY: DUCTILE IRON
 JAWS: HARDENED STEEL
 WEIGHT: 114.6 LBS
 SEE SHEETS 2 AND 3 FOR PERPENDICULARITY, PARALLELISM AND SQUARENESS

MATERIAL:	SEE NOTES
HARDNESS:	54 HRC
FINISH:	
CONTACT INFORMATION:	
Toll Free 855-869-2425 Fax 508-653-5110	
www.tmxtools.com	
34 TALBOT ROAD NORTH BOROUGH, MA 01532 USA	
 THIRD ANGLE PROJECTION	

	NAME	DATE
DRAWN	T.T.	04-08-2020
ENG APPR.	T.T.	04-08-2020
MFG APPR.		
Q.A. APPR.		
SALES APPR.		

CONFIDENTIAL

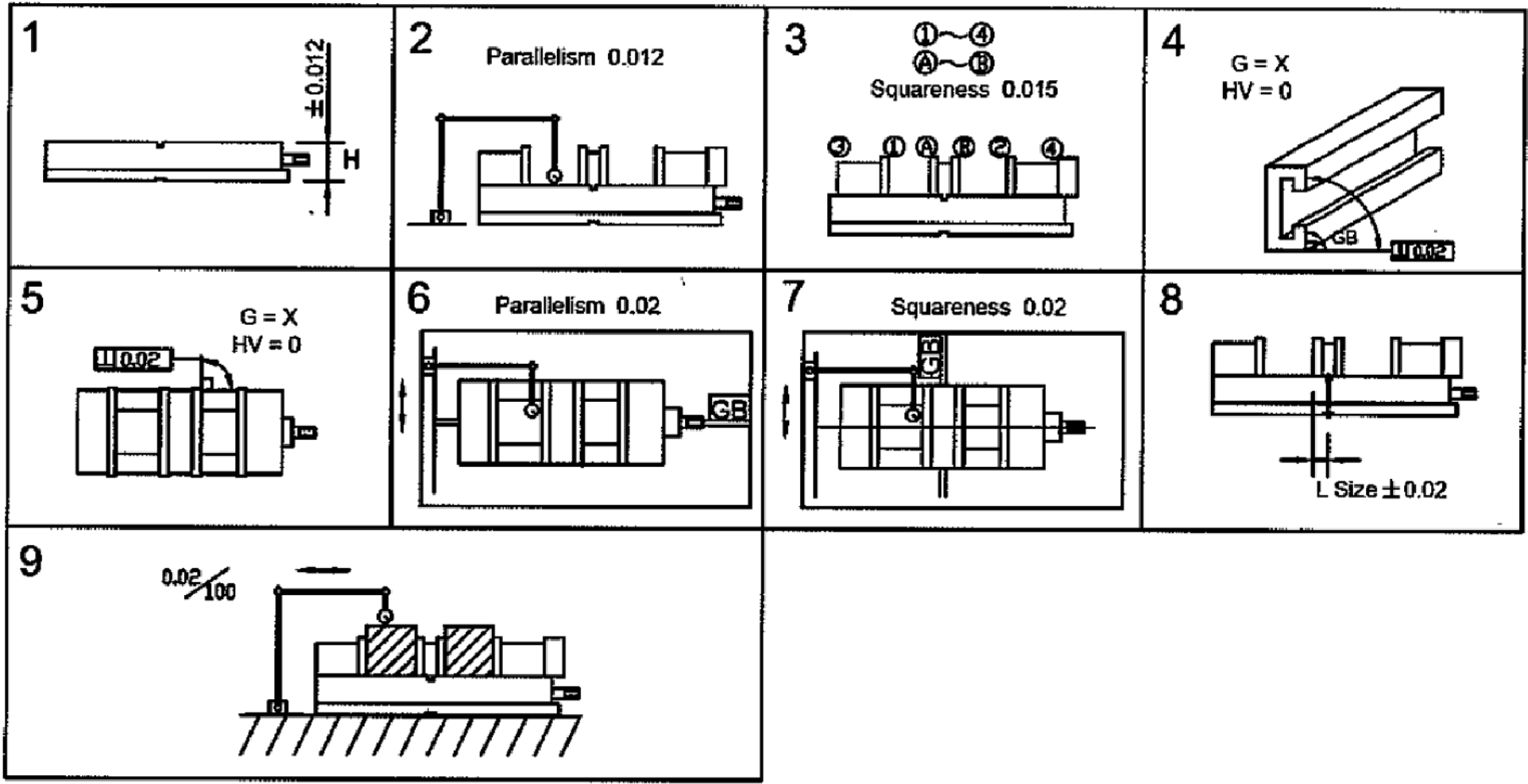
THIS DRAWING AND THESE SPECIFICATIONS ARE THE SOLE PROPERTY OF TOOLMEX INDUSTRIAL SOLUTIONS. AND SHALL NOT BE REPRODUCED, OR COPIED IN PART OR AS A WHOLE WITHOUT THE EXPRESS WRITTEN PERMISSION OF TOOLMEX INDUSTRIAL SOLUTIONS IS PROHIBITED.

tmx™
 SOLE PROPERTY OF
 TOOLMEX INDUSTRIAL SOLUTIONS

TITLE
 6" DOUBLE STATION VISE

SIZE	DWG. NO.	REV
A	3-224-006	C

DO NOT SCALE DRAWING SHEET 1 OF 3



1	"H" tolerance: running face to bottom within	$\pm 0.0005"$ $\pm(0.012\text{mm})$
2	Parallelism: running face to bottom of bed	0.0005" (0.012mm)
3	Squareness: between running face and jaw plate	0.0006" (0.015mm)
4	Squareness: both sides to running face	0.0008" (0.02mm)
5	Squareness: both sides to fixed jaw plate	0.0008" (0.02mm)
6	Parallelism: keyways on bottom of bed to jaw plate	0.0008" (0.02mm)
7	Squareness: keyways on bottom of bed to jaw plate	0.0008" (0.02mm)
8	"L" tolerance: keyways on bottom of bed to jaw plate within	$\pm 0.0008"$ $\pm(0.02\text{mm})$
9	1. Parallelism: running face of the test block to bottom of bed	0.0008" (0.02mm)
	2. Jaw opening	4" (102mm)